

PRACTICAL OBSTETRICS-5TH STAGE

DR. YASEEN M.

OBSTETRICAL TERMINOLOGY



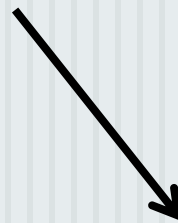
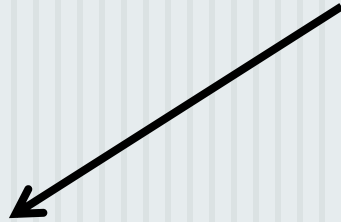
Normal

p. p. p

Presentation

Position

Posture



Presentation :



relationship between the **longitudinal axis of fetus** and **maternal birth canal.**

- Longitudinal (Anterior, posterior)
- Vertical(ventral, dorsal)
- Transverse(ventral ,dorsal)

Position:

relationship between **maternal birth canal** and **fetal vertebral column**.

-dorsal

-ventral

-lateral (left or right)

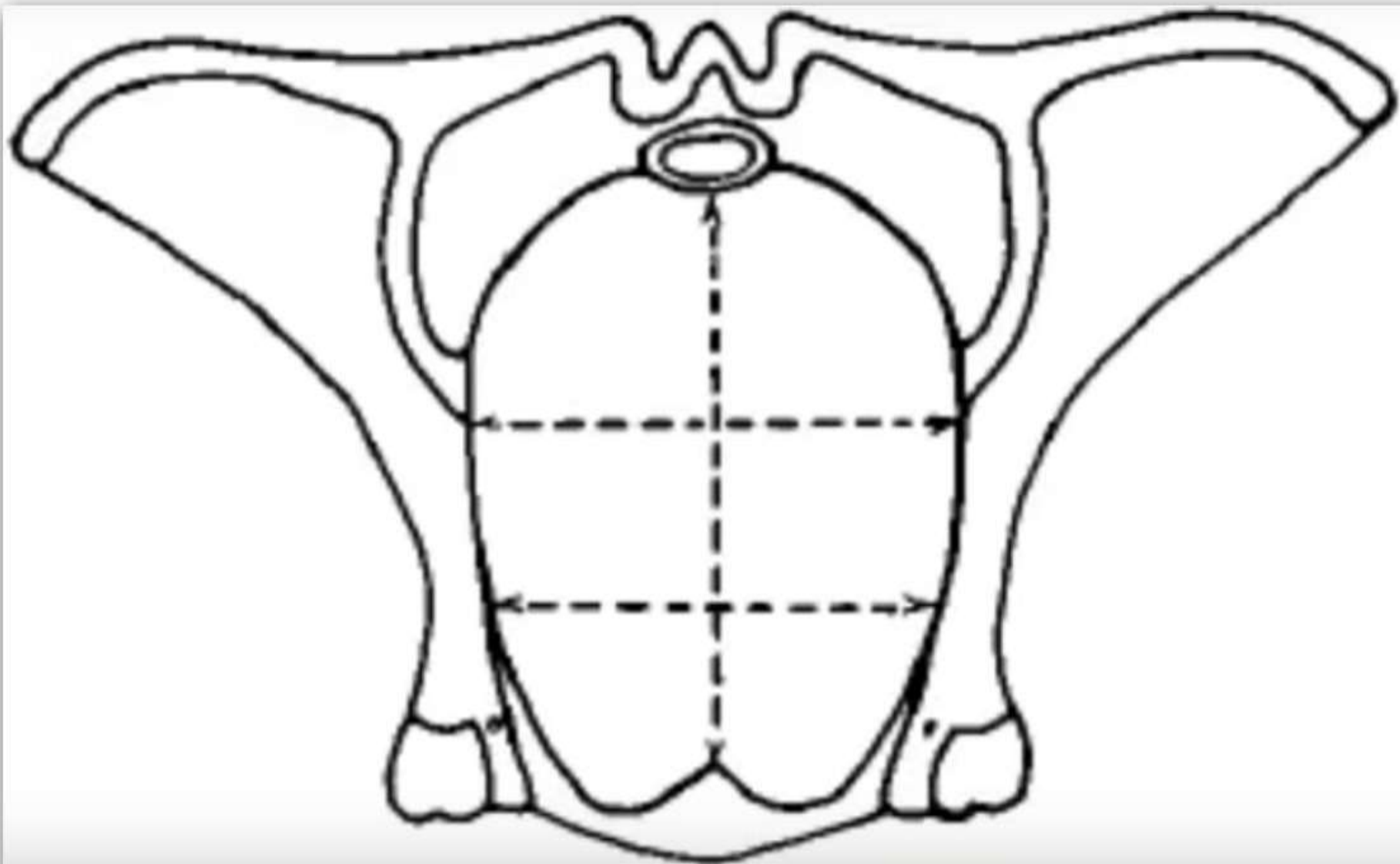
Posture:

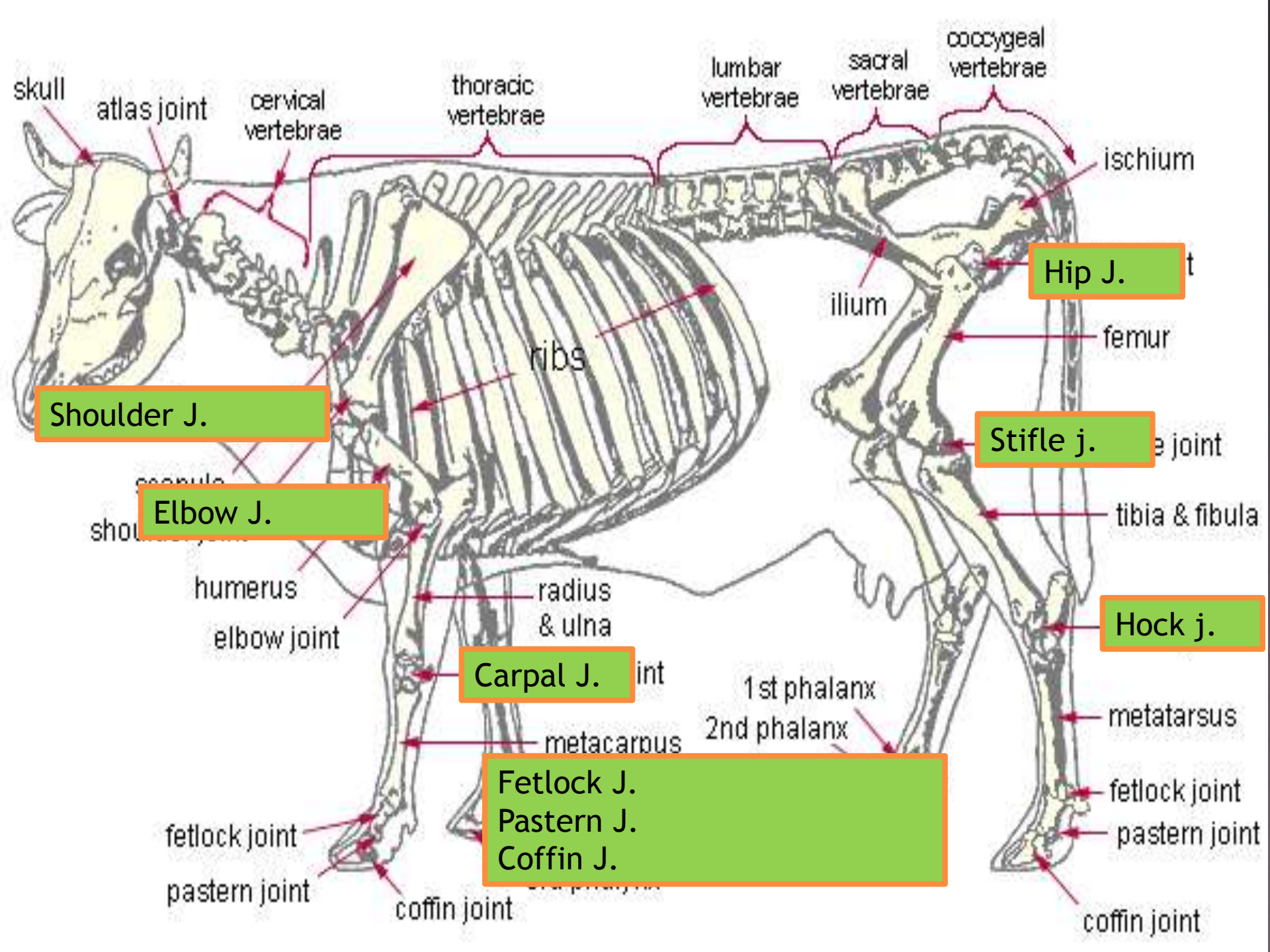
involves flexion or extension of the cervical, head or limb joints.

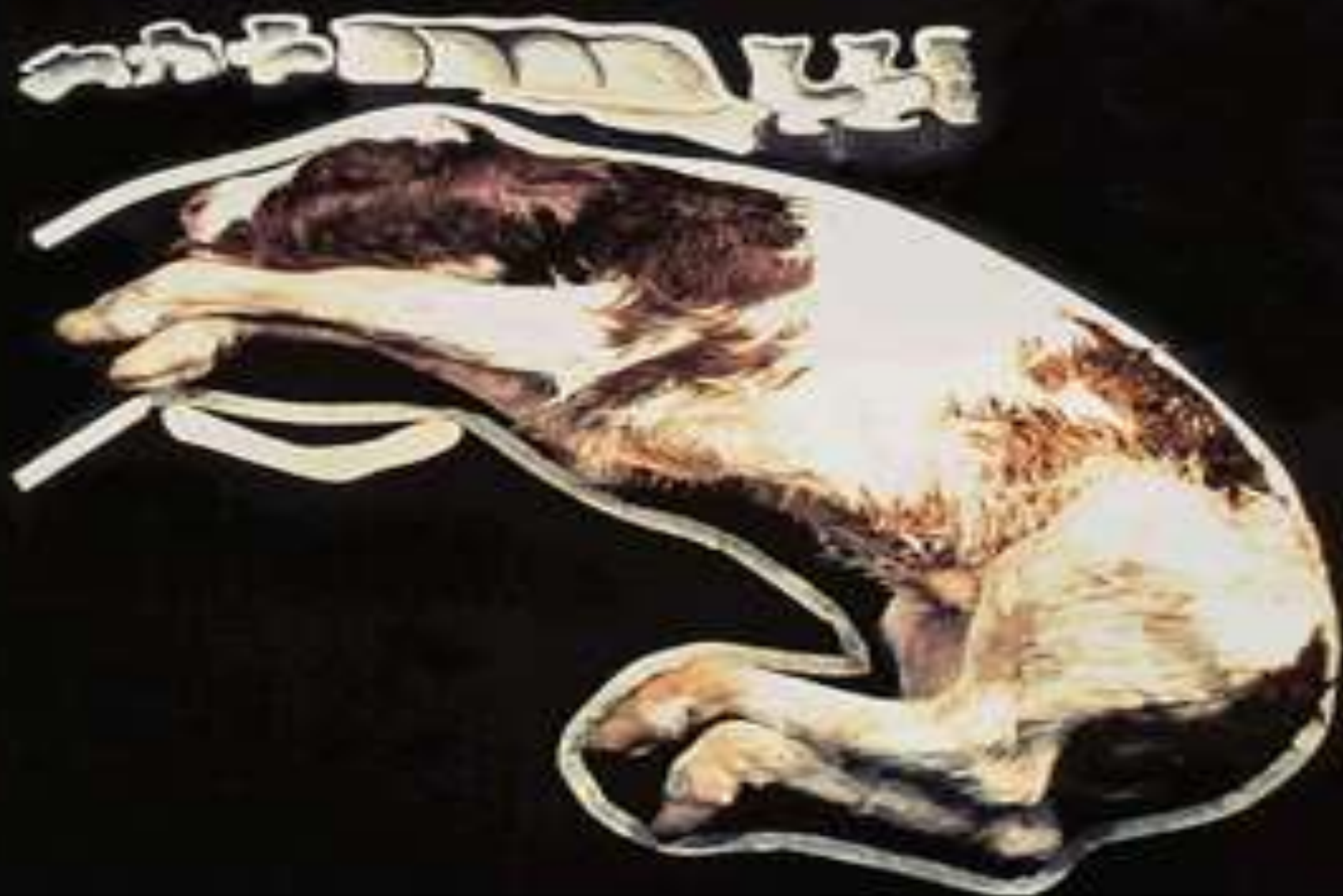
-lateral (Right, Left)

-ventral

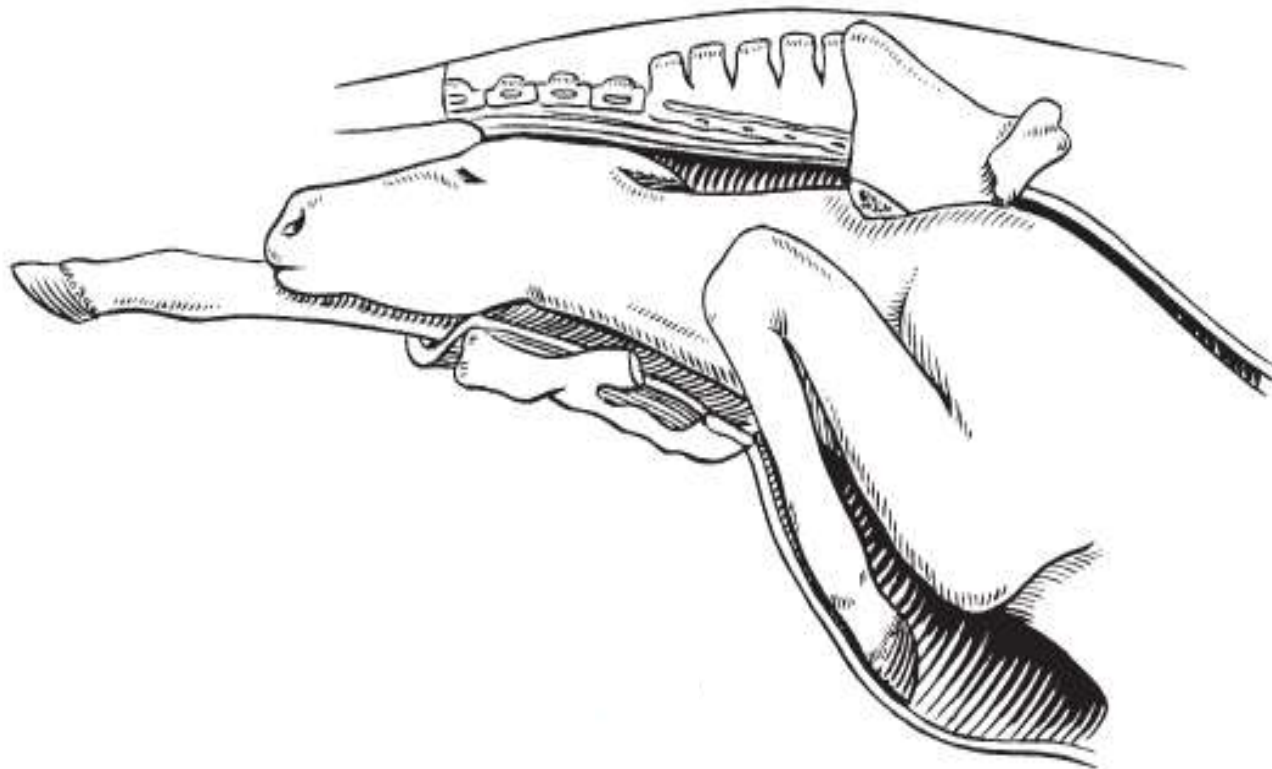
-dorsal



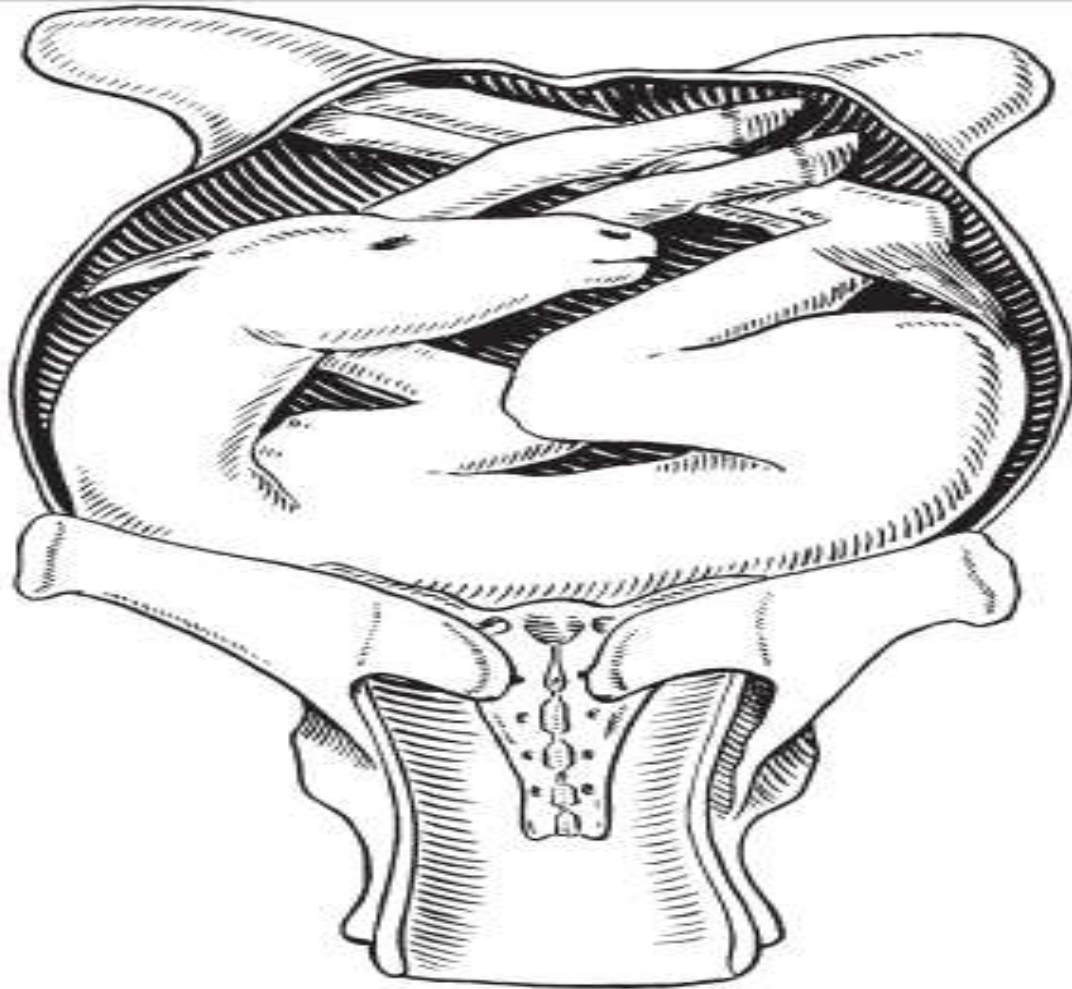




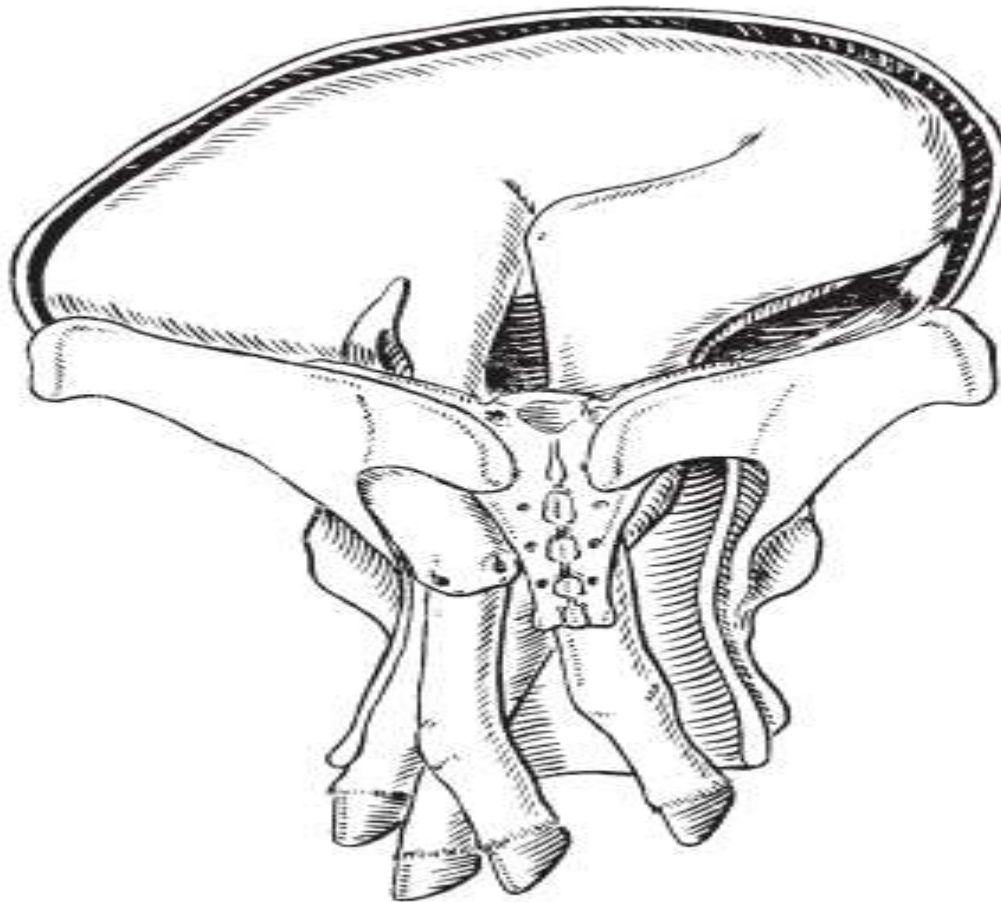




Anterior presentation ,dorsal position ,unilateral carpal flexion

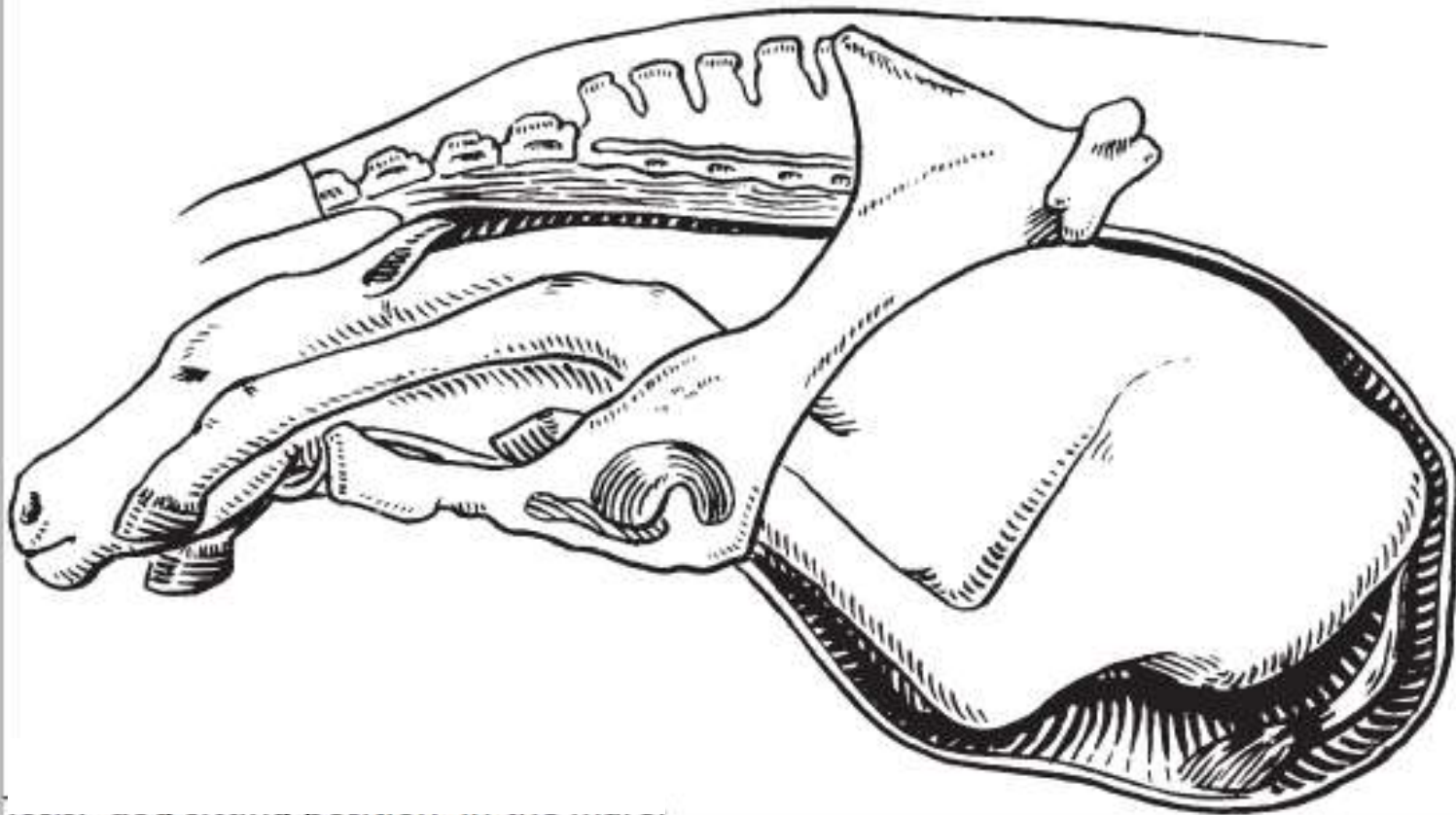


Dorso-transverse presentation

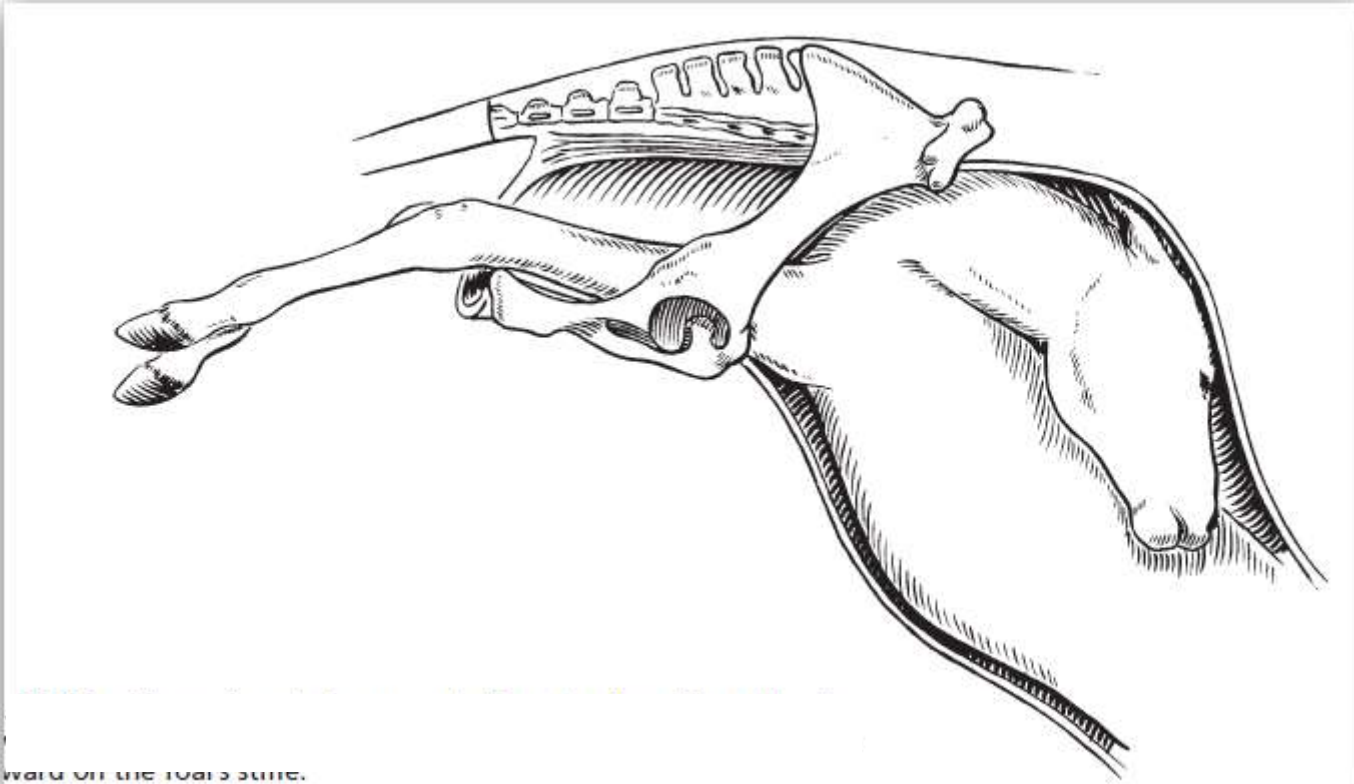


the mare, uterine body gestation.

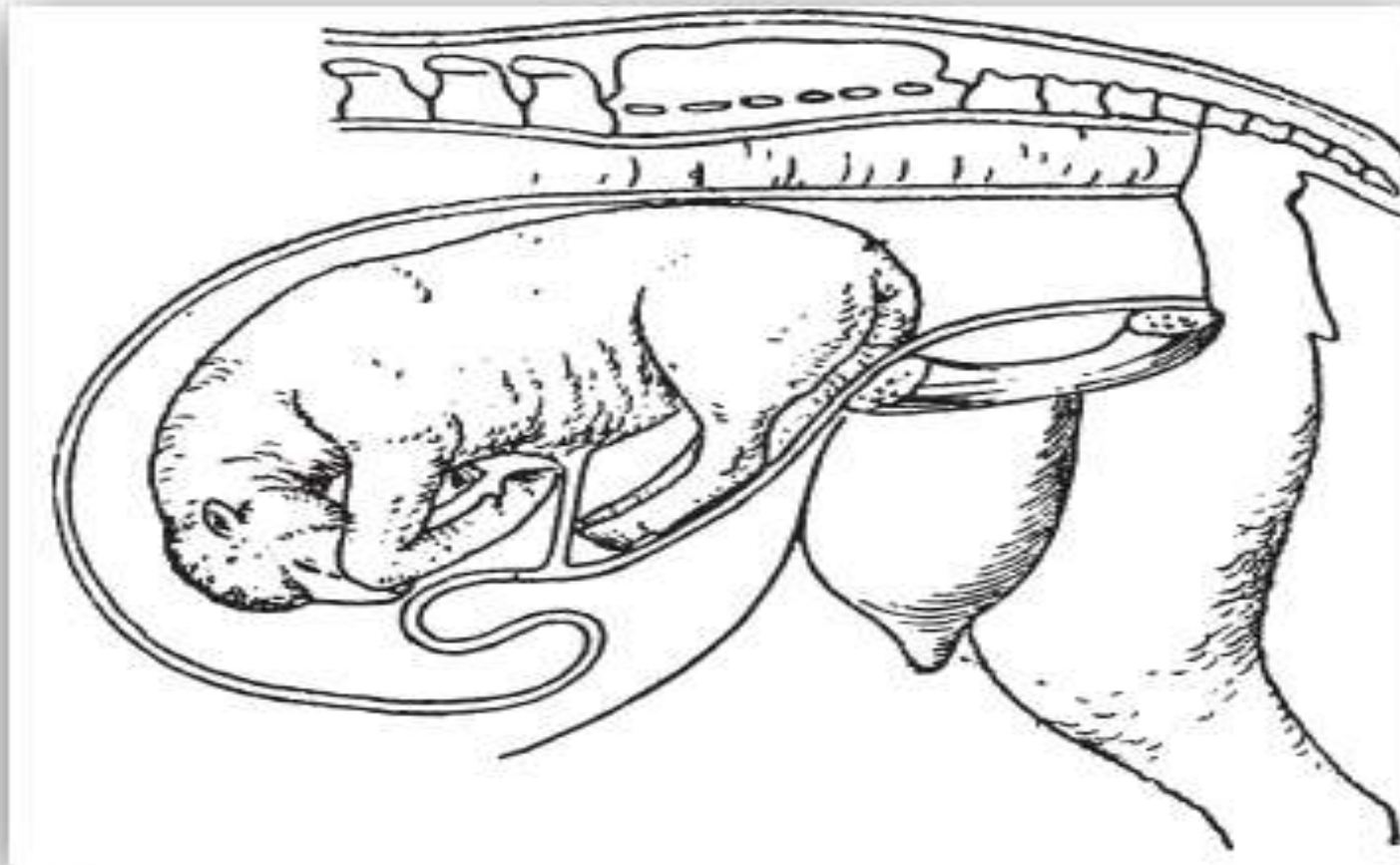
Ventro-transverse presentation



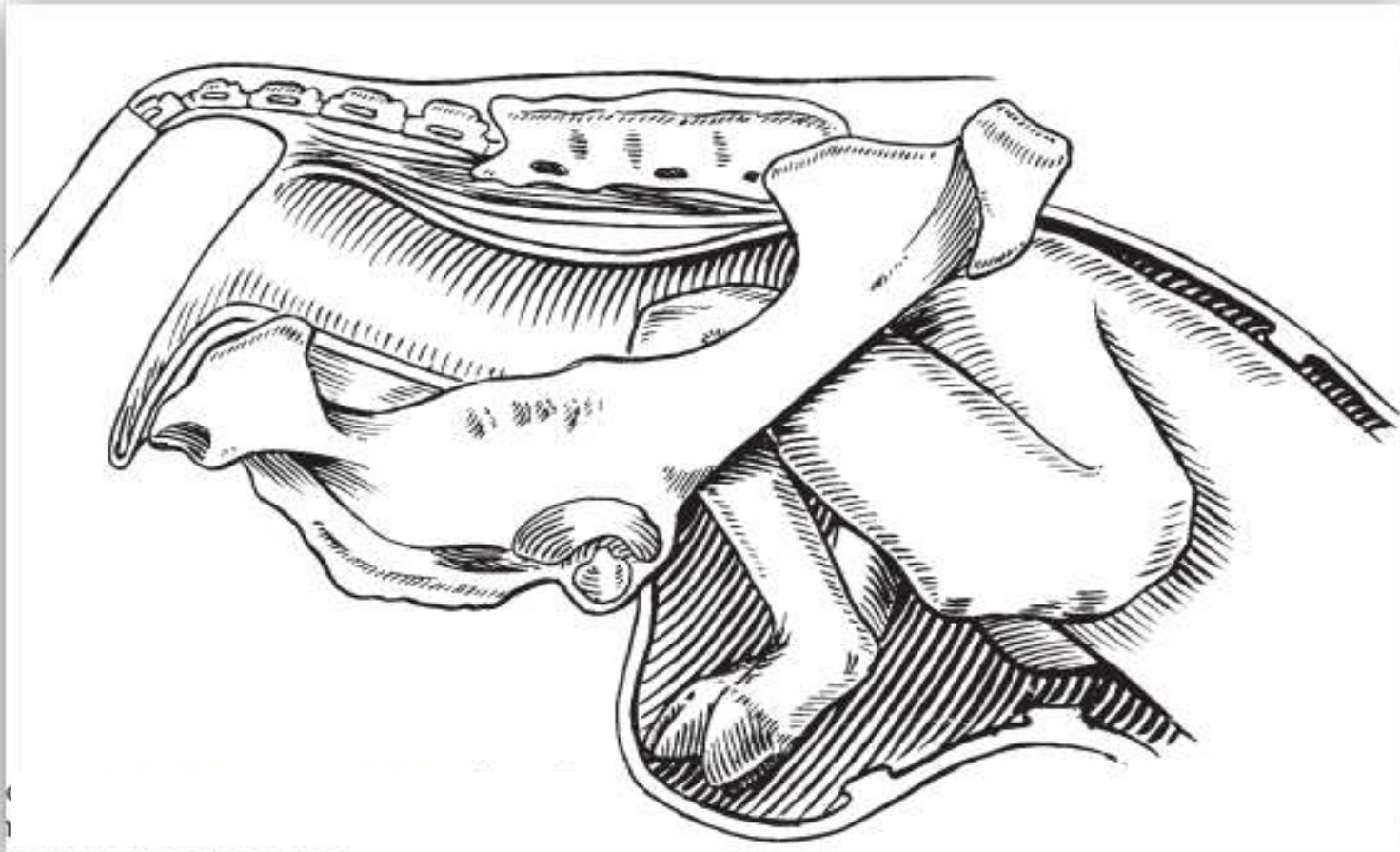
Anterior presentation, dorsal position ,4- limbs extended with head
(dog setting)



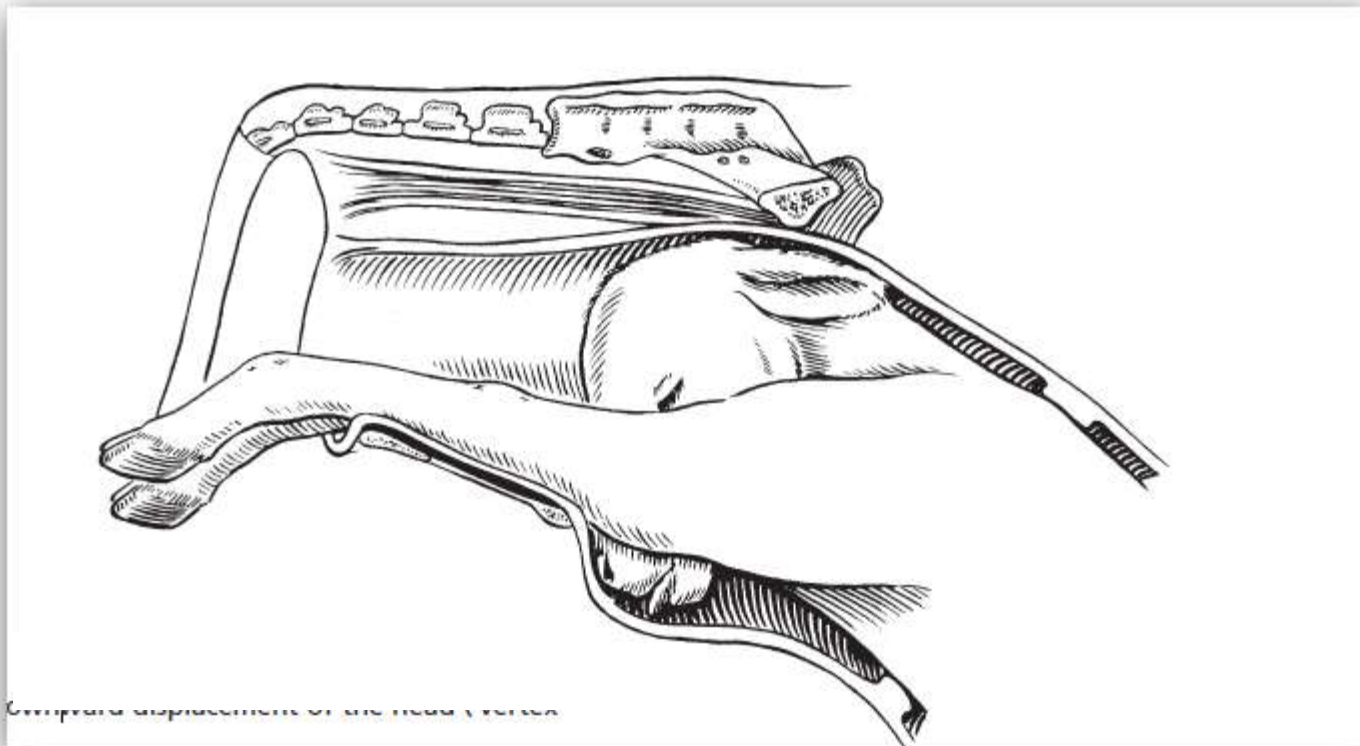
Anterior presentation ,dorsal position ,lateral deviation of head and neck



posterior presentation, dorsal position, bilateral hip flexion posture
(breech presentation)

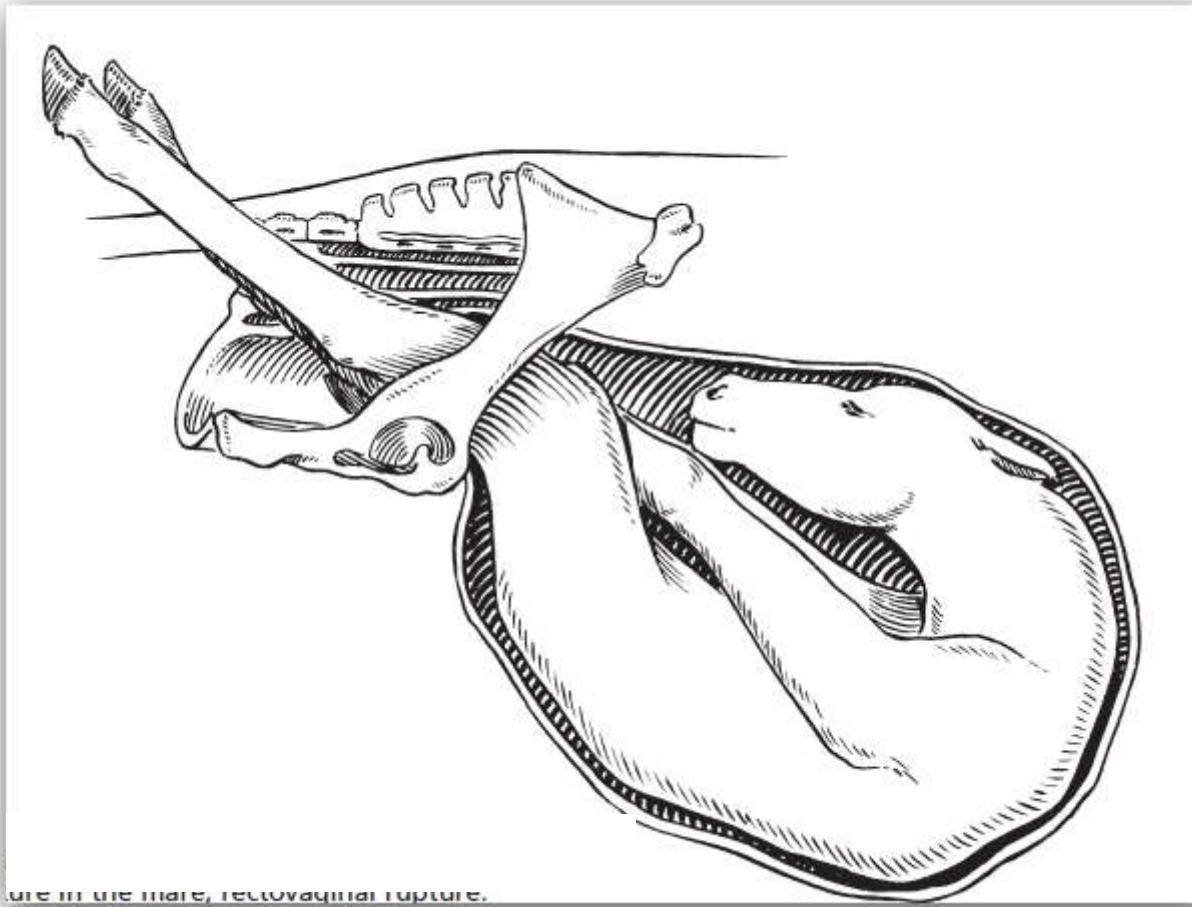


posterior presentation, dorsal position, bilateral hock flexion .

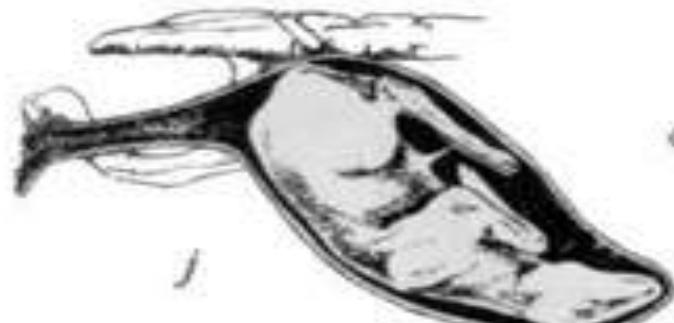
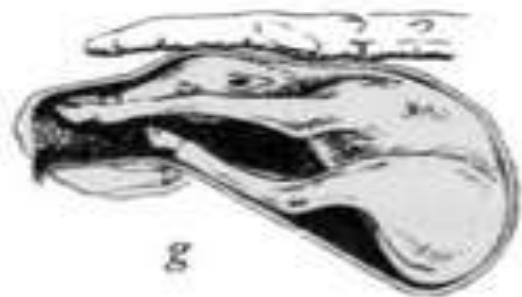
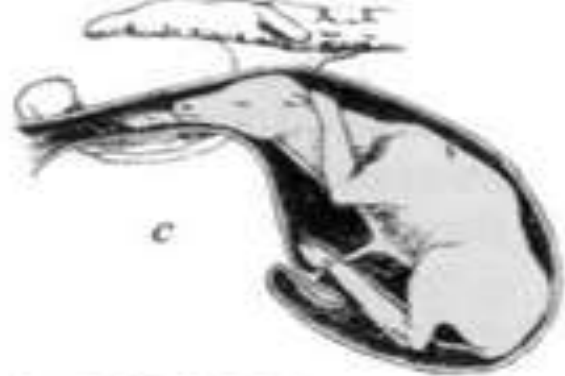
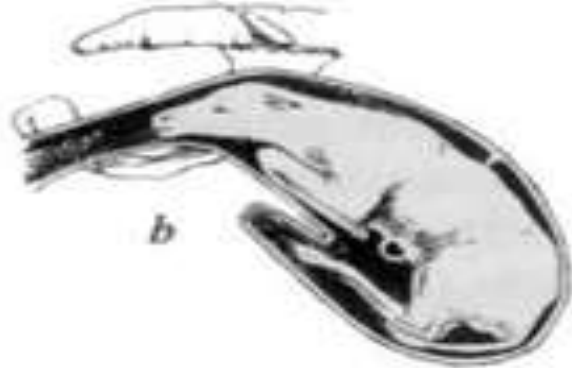


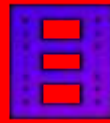
Complete displacement of the head vertex

**Anterior presentation ,dorsal position ,downward of the head
(vertex posture)**



Posterior presentation ,ventral position, bilateral hind-limbs extended





FOALinMARE trailer - YouTube[via torchbrowser.com].mp4



